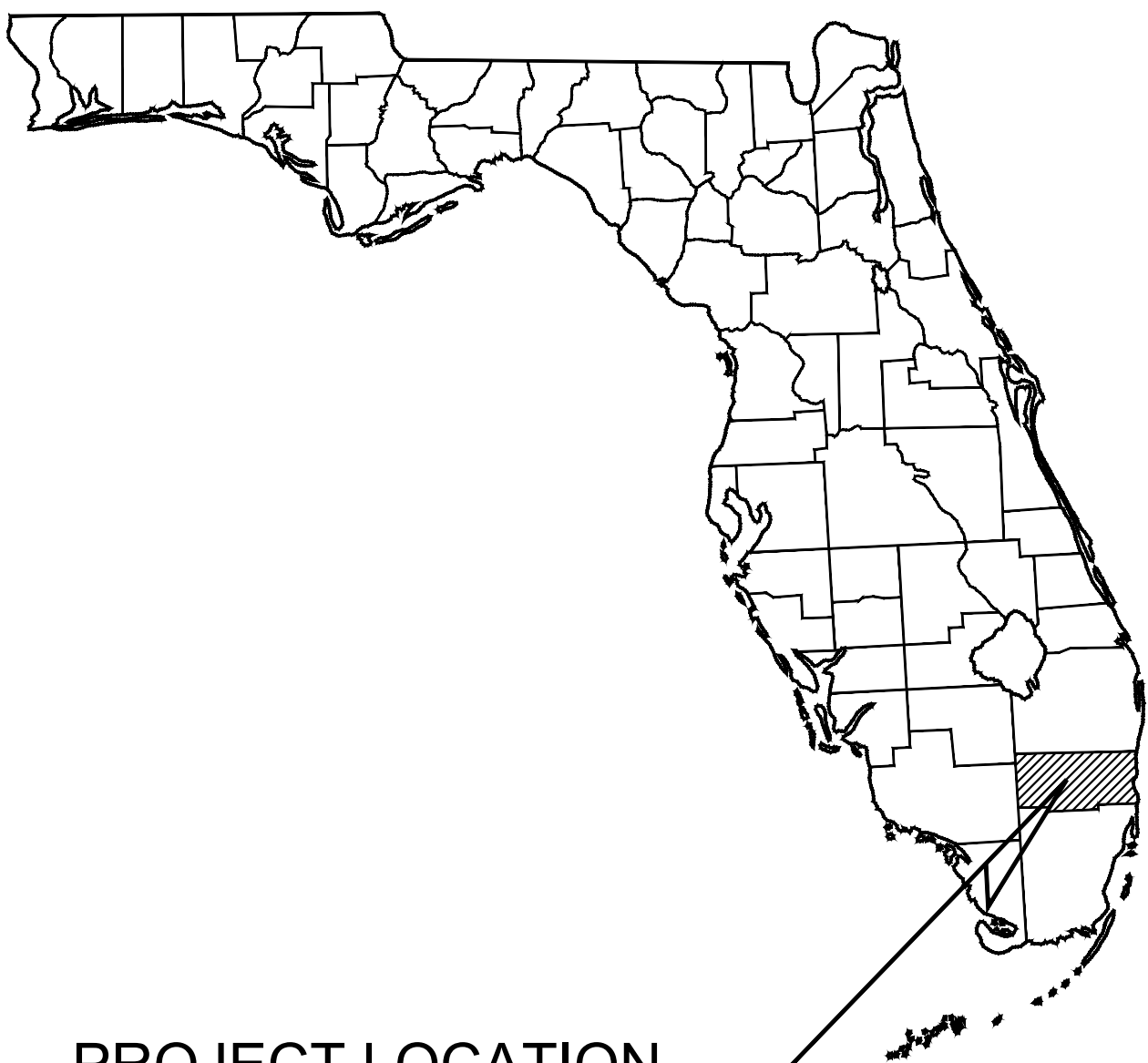


PRELIMINARY CIVIL PLANS
FOR
MODERA POMPANO BEACH

855 S FEDERAL HWY,
POMPANO BEACH, FL
SEPTEMBER, 2025



PROJECT LOCATION
BROWARD COUNTY

PROJECT TEAM:

OWNER/DEVELOPER:

MCRT INVESTMENTS LLC
4855 TECHNOLOGY WAY, SUITE 400
BOCA RATON, FLORIDA, 33431
CONTACT: ANDREA ROWE

CIVIL:

KIMLEY-HORN AND ASSOCIATES, INC.
8201 PETERS ROAD, SUITE 2200
PLANTATION, FL 33324
(954) 990-0229
CONTACT: GIOVANNI FERNANDEZ, P.E.

ARCHITECT:

DORSKY YUE
101 NE 3RD AVENUE, SUITE 500
FORT LAUDERDALE, FL, 33301
(954) 703-7830
CONTACT: VICTOR YUE

LANDSCAPE:

WITKIN HULTS & PARTNERS
307 S. 21ST AVENUE
HOLLYWOOD, FL, 33020
(954) 923-9681
CONTACT: ANDREW SYKES

SURVEYOR:

STONER SURVEYORS
4341 SW 62ND AVENUE
DAVIE, FL, 33314
(954) 585-0997
CONTACT: JAMES D. STONER

LIST OF CONTACTS:

WATER & SEWER:

CITY OF POMPANO BEACH
WATER/ SEWER
100 ATLANTIC BLVD,
POMPANO BEACH, FL 33060
NATHANIEL WATSON
NATHANIEL.WATSON@COPBFL.COM

FIRE PROTECTION:

CITY OF POMPANO BEACH
FIRE DEPARTMENT
POMPANO BEACH, FLORIDA 33060
(954) 786-4719
CONTACT: KELVIN MCNABB, FIRE MARSHAL

TRAFFIC CONTROL:

BROWARD COUNTY TRAFFIC
ENGINEERING DEPARTMENT
2300 W COMMERCIAL BLVD
FORT LAUDERDALE, FL, 33309
(954) 847-2745

BUILDING DEPARTMENT:

POMPANO CITY HALL
100 WEST ATLANTIC BOULEVARD,
POMPANO BEACH , FL
(954) 786-4672
CONTACT: SAPPHIRE.JOHNSON@COPBFL.COM

UTILITY PROVIDERS:

AT&T DISTRIBUTION

TELEPHONE
CONTACT: DINO FARRUGGIO
DF1979@ATT.COM

ADVANCED CABLE DBA

CATV
CONTACT:DESIGN TEAM
(561) 519-9937

BROWARD COUNTY
TRAFFIC ENGINEERING

TRAFFIC CONTROL
CONTACT: ROBERT BLOUNT
(954) 847-2745

BREEZELINE

CONTACT: JAVARES HALL
JHALL@BREEZELINE.COM

COMCAST CABLE

FIBER OPTIC
CONTACT: RICARDO DAVIDSON
(786) 586-8505

CROWN CASTLE NG

FIBER OPTIC
(888) 632-0931 EX. 2

FDOT/ELAND ENGINEERING

FIBER OPTIC, ELECTRIC
CONTACT: JENNIFER WELCH
(954) 847-1995

FLORIDA POWER & LIGHT

ELECTRIC
CONTACT: MATHEW COLLINS
MATTHEW.COLLINS2@FPL.COM

HOTWIRE

COMMUNICATIONS
FIBER OPTIC, TELEPHONE
CONTACT: WALTER DAVILA
(954) 699-0900

MCi

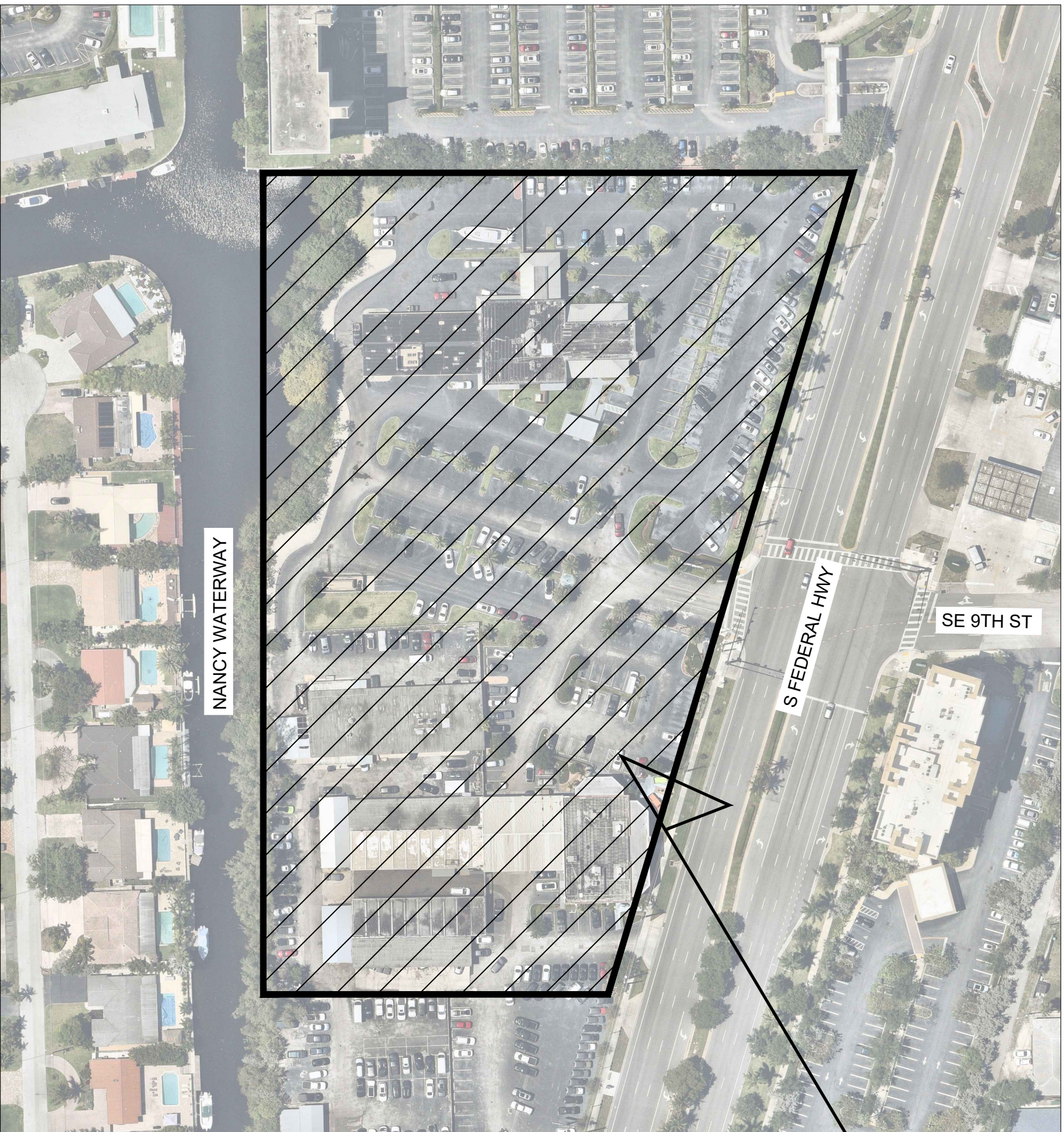
COMMUNICATION LINES, FIBER
CONTACT: INVESTIGATION TEAM
972-729-6016

TECO

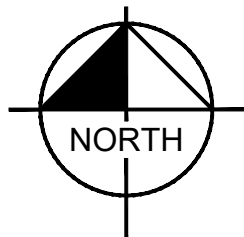
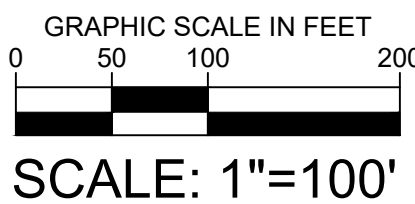
GAS
CONTACT: DAVID RIVERA
DRIVERA@TECOENERGY.COM

WINDSTREAM ENTERPRISE

WHOLESALE
LOCATE.DESK@WINDSTREAM.COM



VICINITY MAP



PROJECT LOCATION

Kimley»Horn

© 2025 KIMLEY-HORN AND ASSOCIATES, INC.

SHEET LIST TABLE	
SHEET NUMBER	SHEET TITLE
C-001	COVER SHEET
C-002	GENERAL NOTES
C-100	DEMOLITION & EROSION CONTROL PLAN
C-101	DEMOLITION & EROSION CONTROL DETAILS
C-200	HORIZONTAL CONTROL, SIGNAGE AND MARKING PLAN
C-201	HORIZONTAL CONTROL, SIGNAGE AND MARKING DETAILS
C-202	HORIZONTAL CONTROL, SIGNAGE AND MARKING DETAILS
C-300	PAVING AND GRADING PLAN
C-301	CROSS SECTIONS
C-302	DRAINAGE PLAN
C-303	PAVING,GRADING & DRAINAGE DETAILS
C-304	PAVING GRADING & DRAINAGE DETAILS
C-305	PAVING GRADING & DRAINAGE DETAILS
C-306	PAVING GRADING & DRAINAGE DETAILS
C-307	PAVING GRADING & DRAINAGE DETAILS
C-400	WATER AND SEWER PLAN
C-401	WATER & SEWER DETAILS
C-402	WATER & SEWER DETAILS
C-403	WATER & SEWER DETAILS
C-404	WATER & SEWER DETAILS
C-405	WATER & SEWER DETAILS
C-500	FIRE ACCESS PLAN
C-600	PHOTOMETRICS PLAN
C-601	PHOTOMETRICS DETAILS
C-700	CPTED PLAN

Kimley»Horn

© 2025 KIMLEY-HORN AND ASSOCIATES, INC.
8201 PETERS ROAD, SUITE 2200, PLANTATION, FL 33324
PHONE: 954-535-5100 FAX: 954-739-2247
WWW.KIMLEY-HORN.COM REGISTRY No. 35106

LICENSED PROFESSIONAL

KHA PROJECT
043175014

DATE
9/4/2025

SCALE AS SHOWN
DESIGNED BY GVF

EA
DRAWN BY

CHECKED BY GVF
DATE:

COVER SHEET

MODERA POMPANO
BEACH

PREPARED FOR

MCRT INVESTMENTS LLC

POMPANO BEACH
FLORIDA

SHEET NUMBER
C-001

DRC

PZ25-12000028

10/15/2025

Plotted By:Abilad, Emmanuel Sheet Set:MILL CREEK POMPANO Layout:C-001 COVER SHEET September 09, 2025 05:35:54pm K:\ETL Civil\043 jbs\043175014 Mill Creek Pompano\Design\CADD\PlanSheets\C-COVER.dwg
This document, together with the concepts and designs presented herein, is an instrument of service, as an instrument of service, is intended only for the specific purpose and client for which it was prepared. Reuse of and improper reliance on this document without written authorization and adaptation by Kimley-Horn and Associates, Inc. shall be without liability to Kimley-Horn and Associates, Inc.